

Martes foina & *Martes martes*

FUR: The fur is long-haired and finely shaggy, with soft, silky touching; the ground colour is brown of various shades; the dorsum is marbled or unicolorous. The breast is contoured; the whitish or yellowish patch might extend towards the throat and the face. The legs are somewhat darker in shade; the tail is distinctly shaggier, dorsally dark brown, ventrally a bit lighter brown; the belly is somewhat paler coloured.

HAIR, MACROSCOPIC: The GH is polychrome, shining; its colour varies from brown and greyish-brown to rufous-reddish.

HAIR, MICROSCOPIC: The cuticular pattern is elongated rhomboidal on the proximal shaft. The medullar cells in the shield are transversally elongated, arranged regularly on the distal shield. The shield is flattened; the cross-section is narrow, oblong.

SIZE: $l_{\max} = 60 \text{ mm}$; $d_{\max} = 145 \mu$; $m/d_x = 0.75$

Martes foina

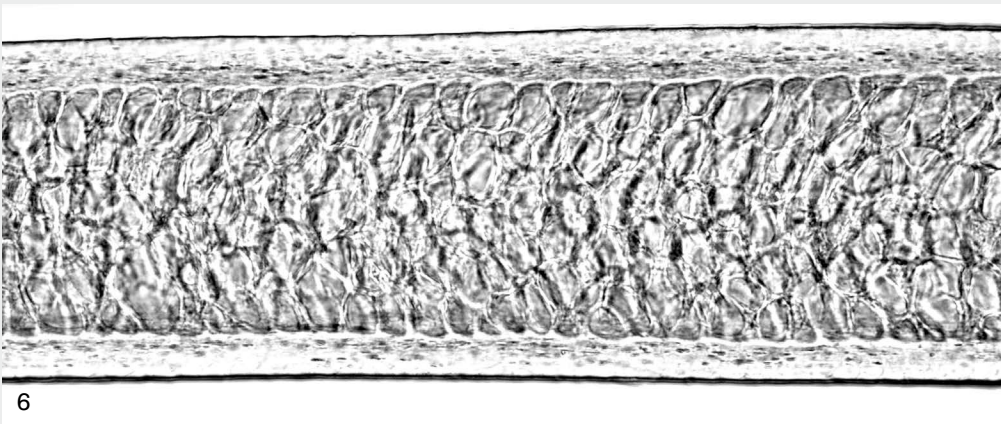
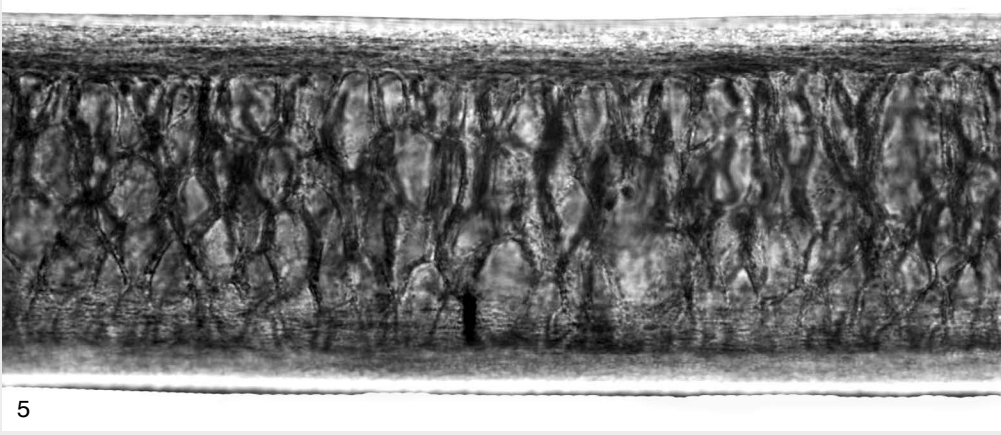
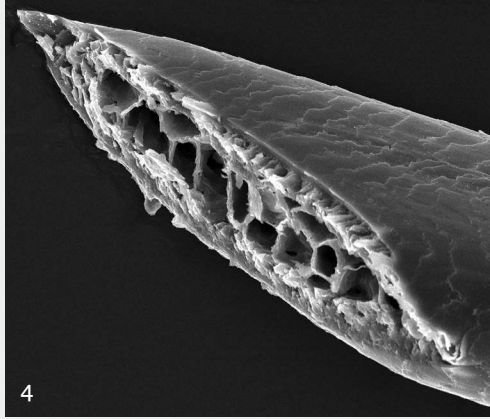
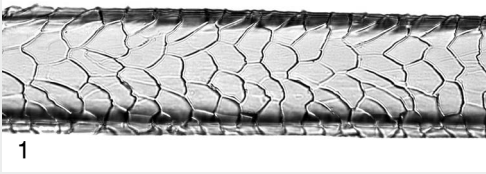
FUR: The fur is most often rather pale greyish-brown or buff but rufous-shaded or dark brown specimens also occur. The large white or ochreous patch of the throat and the breast usually extends towards the forelegs.

HAIR, MICROSCOPIC: The medullar cells of the proximal shield are rounded or polygonal; they are more or less equal in size and closely tighten; the longer axis of the cells is usually not perpendicular to the axis of the stem but closing with it a different angle.

Martes martes

FUR: The fur is dark brown or chestnut-brown, being regularly darker than in the stone marten; the edges of the ears are whitish or ochreous. The large light patch of the throat and the breast is ochreous-yellowish, sometimes even orange-ochreous, and irregularly shaped. There are rather dense and short, soft hairs between the footpads.

HAIR, MICROSCOPIC: The medullar cells of the proximal shield are various in sizes; they are transversally somewhat elongated and polygonal, the longer axis of the cells is usually perpendicular to the axis of the stem.



Martes spp.: 1 = cuticula, transit; 2 = medulla, transit; 3 = cuticula, shaft; 4 = cross-section, shield, SEM; **Martes martes:** 5 = medulla, shield; **Martes foina:** 6 = medulla, shield